

GZF3200KM PLUS

GZ Roll-To-Roll LED UV printer!



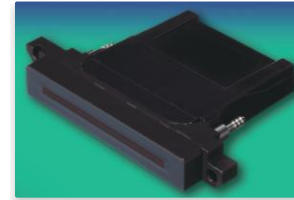
- ◆ Up to 16 Konica 1024i/1024a high-speed print heads.
- ◆ Dual water cooling LED UV lamps are effective and energy saving.
- ◆ Negative pressure system assures stable ink supply and nozzle jetting.
- ◆ White ink stirring system prevents print head clogging & enables stable printing.
- ◆ 4 Pneumatic rubber rollers are for steady and accurate media delivery.
- ◆ Both feeding and taking up system have two air shafts for quick media changing.
- ◆ Delta servo system with speed reducer assures quiet, stable & accurate carriage movement.
- ◆ Water cooling printing platen offers wrinkle-free delivery for the temperature sensitive materials.

GZ
GONGZHENG

ITEM	SPECIFICATION			
Model	GZF3200KM PLUS			
Print Head	8~16 Konica 1024i/Konica 1024a print heads			
Head Config.	2XCMYK; 2XCMYK+2XW 2XCMYKLcLm; 2XCMYKLcLm+2XW 4XCMYK			
Curing System	LED UV curing System			
Ink	UV curable ink			
Colors	Standard: CMYKLcLm, Optional: W			
Ink Supply System	Negative pressure system + White ink stirring system			
Cleaning System	Positive Purging System with solenoid valves			
Servo System	AC motor with speed reducer			
Media System	4 rubber rollers + 4 air shafts			
Media Type	Backlit, Banner Flex, Canvas, Mesh Paper, Synthetic Paper, PVC, Reflective Film, Sticker, Tarpaulin, Textile, Vinyl, Wallcoverings.			
Media Width	Max. 3200mm			
Printing Width	Max. 3200mm			
Printing Speed	Konica 1024a	Resolution	2 groups heads	4 groups heads
	Draft	480x1080dpi	82.8m ² /h	139.8m ² /h
	Production	480x1440dpi	64.5m ² /h	115m ² /h
	Quality Mode	480x2160dpi	44.5m ² /h	83.7m ² /h
	Hi-Precision	480x2880dpi	34.3m ² /h	65.5m ² /h
	Konica 1024i	Resolution	2 groups heads	4 groups heads
	Draft	540x1080dpi	85m ² /h	146m ² /h
	Production	540x1440dpi	66m ² /h	117m ² /h
Quality Mode	540x2160dpi	45m ² /h	83m ² /h	
Hi-Precision	540x2880dpi	34m ² /h	64m ² /h	
Data Interface	USB3.0			
Working Environment	Temperature: 20°C~28°C, Humidity: 40%~70%			
Software	Onyx+GZ Printer Manager			
Image Format	Bitmap, TIF, Quark Xpress, JPEG, EPS, PDF			
Power	Single-phase, 50/60Hz, AC220V±10%, 32A, Regulator: 10kVA			
Dimension (Installed/Packed)	5740x1225x1780mm/5900x1400x2180mm(Printer); 670x480x880mm/740x530x900mm(Water cooling unit)			
Weight(N.W./G.W.)	3400kgs/3940kgs(Printer); 70kgs/75kgs(Water cooling unit);			

*Specifications are liable to change without prior notice.

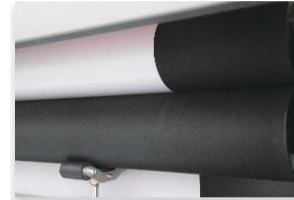
Main Features



Konica 1024i print heads



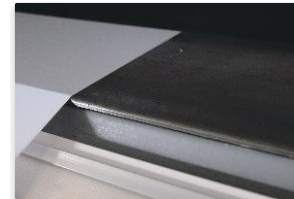
Negative Pressure System



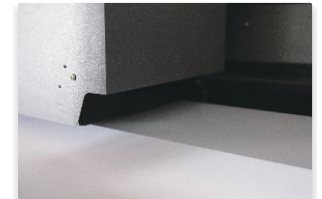
Rubber Roller Feeding System



Four Air Shafts



Water cooling platen



LED UV lamp & Anti-collision unit



☎ โทรศัพท์ : 09-1031-7494 ติดต่อบริษัท ☎ โทรศัพท์ : 0-2045-6513 โทรและแฟกซ์



WEB



FACEBOOK



LINE

18 ซอยนนทบุรี 10 ถนนนนทบุรี ต.บางกระสอ อ.เมืองนนทบุรี จ.นนทบุรี 11000