

# GZM3200KM

Entry-level Roll-To-Roll LED UV printer!

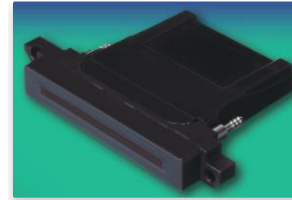


- ◆ Up to 8 Konica 1024i/1024a high-speed print heads.
- ◆ Dual water cooling LED UV lamps are effective and energy saving.
- ◆ Negative pressure system assures stable ink supply and nozzle jetting.
- ◆ Optional white ink enables printing on more kinds of materials such as transparent media and color media.
- ◆ White ink stirring system prevents print head clogging & enables stable printing.
- ◆ Dual air shafts and dual dancer bars ensure steady and accurate media delivery, especially for soft media.
- ◆ Panasonic A6 400W servo system assures smooth, stable & accurate carriage movement.
- ◆ Huge back light panel for easy checking the output quality right after printing, increasing the productivity.

ITEM	SPECIFICATION
Model	GZM3200KM
Print Head	4~8 Konica 1024i/Konica 1024a print heads
Head Config.	1XKCMY 2XKCMY 1XKCMY+W
Curing System	LED UV curing system
Ink	UV curable ink
Colors	Standard: KCMY, Optional: W
Ink Supply System	Negative pressure system + White ink stirring system
Cleaning System	Positive Purging System
Servo System	Panasonic A6 400W servo system
Media System	2 air shafts + 2 dancer bars + pinch rollers
Media Type	Backlit, Banner, Canvas, Backlit Film, Reflective Film, Tarpaulin, Backlit Textile, Vinyl, Wall coverings, PP, PET.
Media Width	Max. 3200mm
Printing Width	Max. 3200mm
Printing Speed	<b>Konica 1024a</b> Resolution 1 group head 2 groups heads
	Draft 480X1080dpi 39m <sup>2</sup> /h 72m <sup>2</sup> /h
	Production 480X1440dpi 31m <sup>2</sup> /h 58m <sup>2</sup> /h
	Quality 480X1080dpi 21m <sup>2</sup> /h 40m <sup>2</sup> /h
	Hi-Precision 480X1440dpi 15.2m <sup>2</sup> /h 30m <sup>2</sup> /h
	<b>Konica 1024i</b> Resolution 1 group head 2 groups heads
	Draft 540X1080dpi 36.5m <sup>2</sup> /h 67.5m <sup>2</sup> /h
	Production 540X1440dpi 28.6m <sup>2</sup> /h 53.5m <sup>2</sup> /h
	Quality 540X1080dpi 19.4m <sup>2</sup> /h 37m <sup>2</sup> /h
	Hi-Precision 540X1440dpi 14.4m <sup>2</sup> /h 28.5m <sup>2</sup> /h
Data Interface	External: USB2.0; Internal: SCSI cable
Working Environment	Temperature: 20°C~28°C, Humidity: 40%~70%
Software	PhotoPRINT UV Edition (Optional Onyx)+GZ Printer Manager
Image Format	Bitmap, TIF, Quark Xpress, JPEG, EPS, PDF
Power	Single-phase, 50/60Hz, AC220V±10%, 10A, Regulator: 10kVA
Dimension	4790x1193x1520mm(Installed)/5930x1150x1740mm(Packed)
Weight(N.W./G.W.)	1035kgs/1335kgs

\*Specifications are liable to change without prior notice.

## Main Features



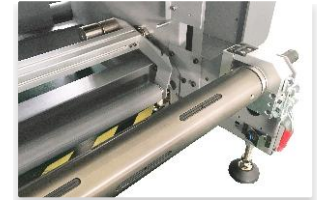
Konica 1024i/1024a print heads



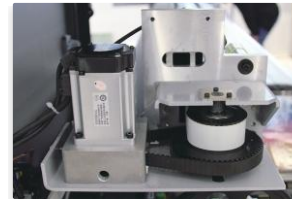
Negative Pressure System



LED UV lamp & Anti-collision unit



Air Shaft and dancer bar



Panasonic A6 400W servo system



Huge LED back light panel



☎ โทรศัพท์ : 09-1031-7494 ติดต่อบริษัท ☎ โทรศัพท์ : 0-2045-6513 โทรและแฟกซ์



WEB



FACEBOOK



LINE

18 ซอยนนทบุรี 10 ถนนนนทบุรี ต.บางกระสอ อ.เมืองนนทบุรี จ.นนทบุรี 11000