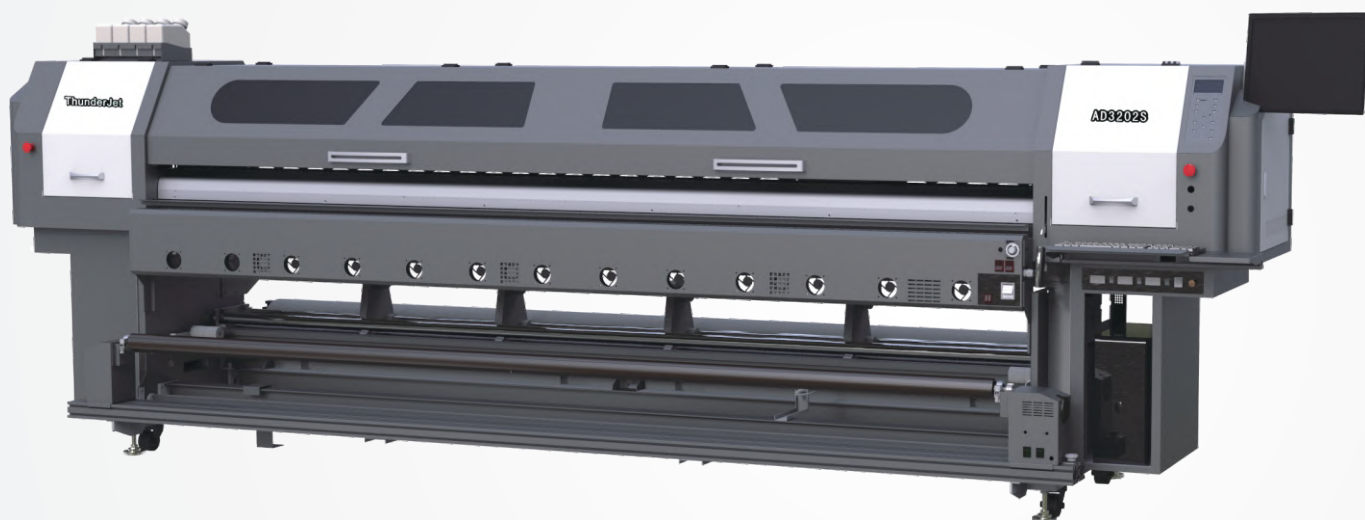


# AD3202S



**Original Epson DX5 Heads!**  
**3.2M Greyscale Solution!**



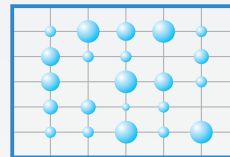
ITEM	SPECIFICATION
Model	ThunderJet AD3202S
Print Head	Dual Epson DX5 print heads
Technology	Piezo Variable dot (Greyscale)
Ink	C.M.Y.K Eco solvent ink (2 years outdoor durability)
Printing Width	Max. 3200mm
Media Type	Coated PP, Vinyl, Film, Banner.....
Printing Speed	Draft 40.9m <sup>2</sup> /h Production 31m <sup>2</sup> /h High-res 22.5m <sup>2</sup> /h Photo 20.7m <sup>2</sup> /h
Data Interface	External: USB2.0; Internal: High-speed SCSI
Working Environment	Temp.23°C~29°C, Humidity:50%~80%
Software	Photoprint/Onyx...+ThunderJet control console
Power	50Hz/AC,220V±10%
Dimension	LxWxH(mm): 5150x1100x1600

Specifications are liable to change without prior notice. The printing speeds are measured in 3.2 m width printing.



### Original Epson DX5 heads

Dual original Epson DX5 eco-solvent print heads reach true 1440dpi, deliver outstanding printing speed and stunning printing quality.



### GZ Greyscale Technology

GZ Greyscale Technology delivers flawless skin tone, smoother gradient, crisp text and intricate detail without compromising speed.



### Auto Capping&Wiping System

Auto Capping&Wiping System with aluminum base perfectly cleans the print head nozzle face to achieve excellent printing quality and extend the print head life.



### Multi-purpose Feeding Sys.

Dual-roll constant tension feeding system plus regular heavy-duty feeding system ensure stable and precise feeding for different kinds of media.



### Unique AR Taking-up

Easy installation, heavy-duty and long service life. Constant tension controlled system ensures stable taking-up. Adjustable torque and speed for various kinds of media.



### IR Drying System

Intelligent IR drying system works synchronously with printing, not only enhancing ink dryness but also saving energy and securing printing.

